

Occasions



Inflatable GRAVEYARD GHOST



**WARNING: READ AND UNDERSTAND
ALL INSTRUCTIONS**

Failure to follow all instructions listed below, may result in electric shock, fire and /or serious personal injury.

WARNING: ELECTRIC PRODUCT – Keep away from children. Not recommended for children under 3 years of age. As with all electrical products, precautions should be observed during handling and use to reduce the risk of electric shock. If the supply cord is damaged, it must be replaced by the manufacturer, its service agent or similarly qualified persons in order to avoid a hazard.

Adults Note: Periodically examine this product for damage to the cord, housing or other parts that may result in the risk of fire, electric shock or injury. If the product is damaged, do not use it

DANGER – To prevent electric shock, do not immerse in water; wipe clean with damp cloth. Immersing this product can result in an electric shock.



IMPORTANT SAFETY INSTRUCTIONS

READ AND FOLLOW ALL SAFETY INSTRUCTIONS

When using electrical products, basic precautions should always be followed, including the following:

- This is an electrical product – not a toy! To avoid risk of fire, burns, personal injury, and electric shock, it should not be played with or placed where small children can reach it.
- Do not use seasonal products outdoors unless marked suitable for indoor and outdoor use. When products are used in outdoor applications, connect the product to a Ground Fault Circuit Interrupting (GFCI) outlet. If one is not provided, contact a qualified electrician for proper installation.
- This seasonal use product is not intended for permanent installation or use.
- Do not mount or place near gas or electric heaters, fireplaces, candles, or other similar sources of heat.
- Do not secure product wiring with staples or nails or place on sharp hooks or nails.
- Do not let lamps rest on the supply cord or on any wire.
- Unplug the product when leaving the house, when retiring for the night, or if left unattended.
- Do not use this product for other than its intended purpose.
- Do not hang ornaments or other objects from cord, wire, or light string.
- Do not close doors or windows on the product, or extension cords, as this may damage the wire insulation.
- Do not cover the product with a cloth, paper, or any material not part of the product when in use.
- Do not place the product against carpeting, furniture, or any other fabric when in use.
- Read and follow all instructions that are on the product or provided with the product.



SAVE THESE INSTRUCTIONS USE AND CARE INSTRUCTIONS

- Before using and reusing, inspect the product carefully. Discard any products that have cut, damaged or frayed wire insulation cords, cracks, lamp holders or enclosures, loose connection, or exposed copper wire.
- When storing the product, carefully removed the product from wherever it is placed, including trees, branches, or bushes, to avoid any undue strain or stress on the product conductors, connections and wires.
- When not in use, store neatly in a cool, dry location protected from sunlight.

PART LIST

- 1 X Inflatable**
- 1 X Air Blower**
Input: 12V DC 0.50A-60Hz
- 1 X UL Listed Adapter**
Input: 100-120VAC 50 / 60Hz 0.45A,
Output: 12V DC/0.60A
- 2 X Tether Ropes**
- 2 X Tether Stakes**

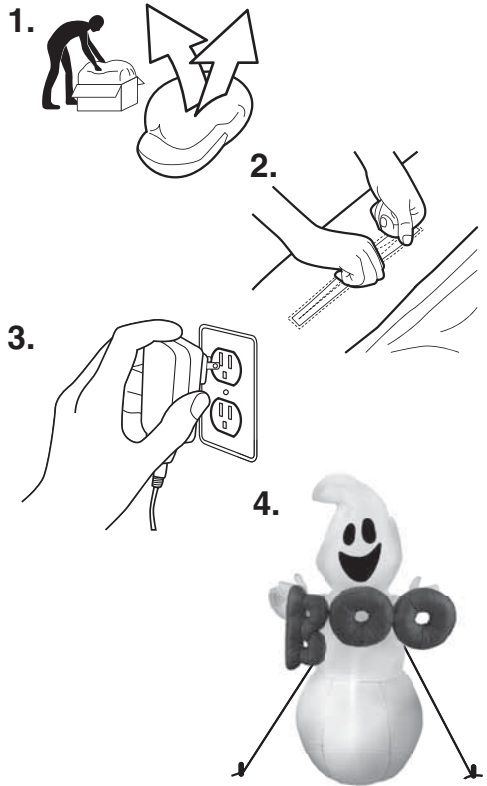


SETUP INSTRUCTIONS

1. Remove contents from packaging. Lay out deflated inflatable on a clear and flat area with the feet of the fan touching the ground.

Remove all plastic fasteners and tags. These are part of the packaging and should be discarded.

2. Zip up the zipper into the closed position, inflatable will then fully inflate.
3. Plug into receptacle or other outlet device to inflate your inflatable. NOTE: complete inflation may take a few minutes.
4. Once fully inflated, locate the Nylon Loops on the bottom of the fabric base and insert the spiral stakes through the Nylon loops and into the ground.



CAUTION:

1. For even better nighttime illumination, you may choose to place an outdoor approved spotlight in front of your inflatable. (Outdoor approved spotlight not provided). Do not place the bulb too close to the inflatable as it may melt or damage the plastic.
2. Do not place any foreign objects inside your inflatable.
3. During inclement weather conditions such as heavy rains, snow and windstorms, store the product indoors
4. Operation of your inflatable during extreme weather conditions is not recommended.
5. Do not store the inflatable when it is wet.

USER SERVICING INSTRUCTION

CAUTION: To reduce the risk of fire or electric shock, do not attempt to replace lamps or modify string.

CAUTION: To reduce the risk of fire do not deliberately reposition either lamp holder contact.

CAUTION: Do not attempt to inflate your inflatable during unusually strong winds. If it becomes too windy for safe operation, simply allow your inflatable to deflate and wait for better conditions before re-inflating.

CAUTION: Protect the electric fan and power cord from direct exposure to water. This precaution will reduce the risk of electrical shock. When the temperature is below 14°F (-10°C), the motor may temporarily stop running. The motor will begin functioning again in higher temperatures.

TROUBLE SHOOTING CHECKLIST

IF YOUR INFLATABLE IS NOT INFLATING, THE PROBLEM MAY BE:

- The power source is disabled or the cord may be unplugged.
- Debris may be lodged in the motor.
NOTE: Periodically, the inflatable air-intake area may become clogged with grass, leaves or other debris. For best results, it is recommended to check this air-intake area and clean as necessary.
- Occasionally, the hanging fabric of a partially-inflated inflatable can become attached to the Motor's air- intake area. Ensure that fabric is not hanging near the motor during inflation.

- The zippers which seal the inflatable may not be securely closed.
- The connection between the inflatable and fan may not be securely attached.

WARNING

This device complies with Part 15 of the FCC Rules.

Operation is subject to the following two conditions:

- (1) this device may not cause harmful interference, and
- (2) this device must accept any interference received, including interference that may cause undesired operation.

WARNING: Changes or modifications to this unit not expressly approved by the party responsible for compliance could void the user's authority to operate the equipment.

NOTE: This equipment has been tested and found to comply with the limits for a Class B digital device, pursuant to Part 15 of the FCC Rules.

These limits are designed to provide reasonable protection against harmful interference in a residential installation. This equipment generates, uses and can

radiate radio frequency energy and, if not installed and used in accordance with the instructions, may cause harmful interference to radio communications.

However, there is no guarantee that interference will not occur in a particular installation. If this equipment does cause harmful interference to radio or television reception, which can be determined by turning the equipment off and on, the user is encouraged to try to correct the interference by one or more of the following measures:

Reorient or relocate the receiving antenna.

Increase the separation between the equipment and receiver.

Connect the equipment into an outlet on a circuit different from that to which the receiver is connected.

Consult the dealer or an experienced radio/TV technician for help.

For questions or problems with this product please email customerservice@toysinquiry.com for expedited assistance or call 1-800-434-6178.

PLEASE RETAIN THIS INFORMATION
FOR FUTURE REFERENCE.
COLORS AND CONTENTS MAY VARY

 *occasions*

LOS ANGELES, CA 90064.
ALL RIGHTS RESERVED
MADE IN CHINA