

**O**ccasions

# Inflatable YELLOW LAB



**WARNING: READ AND UNDERSTAND  
ALL INSTRUCTIONS**

**Failure to follow all instructions listed below, may result in electric shock, fire and /or serious personal injury.**

**WARNING: ELECTRIC PRODUCT – Keep away from children. Not recommended for children under 3 years of age. As with all electrical products, precautions should be observed during handling and use to reduce the risk of electric shock. If the supply cord is damaged, it must be replaced by the manufacturer, its service agent or similarly qualified persons in order to avoid a hazard.**

**Adults Note: Periodically examine this product for damage to the cord, housing or other parts that may result in the risk of fire, electric shock or injury. If the product is damaged, do not use it**

**DANGER – To prevent electric shock, do not immerse in water; wipe clean with damp cloth. Immersing this product can result in an electric shock.**



# IMPORTANT SAFETY INSTRUCTIONS

## READ AND FOLLOW ALL SAFETY INSTRUCTIONS

### **When using electrical products, basic precautions should always be followed, including the following:**

- This is an electrical product – not a toy! To avoid risk of fire, burns, personal injury, and electric shock, it should not be played with or placed where small children can reach it.
- Do not use seasonal products outdoors unless marked suitable for indoor and outdoor use. When products are used in outdoor applications, connect the product to a Ground Fault Circuit Interrupting (GFCI) outlet. If one is not provided, contact a qualified electrician for proper installation.
- This seasonal use product is not intended for permanent installation or use.
- Do not mount or place near gas or electric heaters, fireplaces, candles, or other similar sources of heat.
- Do not secure product wiring with staples or nails or place on sharp hooks or nails.
- Do not let lamps rest on the supply cord or on any wire.
- Unplug the product when leaving the house, when retiring for the night, or if left unattended.
- Do not use this product for other than its intended purpose.
- Do not hang ornaments or other objects from cord, wire, or light string.
- Do not close doors or windows on the product, or extension cords, as this may damage the wire insulation.
- Do not cover the product with a cloth, paper, or any material not part of the product when in use.
- Do not place the product against carpeting, furniture, or any other fabric when in use.
- This product has a polarized plug (one blade is wider than the other) as a feature to reduce the risk of electric shock. This plug will fit in a polarized outlet only one way. If the plug does not fit fully in the outlet, reverse the plug. If the plug still does not fit, contact a qualified electrician. Do not use an extension cord unless the plug can be fully inserted. Do not alter or replace the plug.
- This product employs overload protection (fuse). A blown fuse indicates an overload or a short-circuit situation. If the fuse blows, unplug the product from the outlet. Also unplug any additional string or products that may be attached to the product. Replace the fuse as per the user servicing instructions (follow product markings for proper fuse rating) and check the product. If the replacement fuse blows, a short circuit may be present and the product should be discarded.
- Before using and reusing, inspect the product carefully. Discard any products that have cut, damaged or frayed wire insulation cords, cracks, lamp holders or enclosures, loose connections, or exposed copper wire.
- Read and follow all instructions that are on the product or provided with the product.

## SAVE THESE INSTRUCTIONS



## SAVE THESE INSTRUCTIONS USE AND CARE INSTRUCTIONS

- Before using and reusing, inspect the product carefully. Discard any products that have cut, damaged or frayed wire insulation cords, cracks, lamp holders or enclosures, loose connection, or exposed copper wire.
- When storing the product, carefully removed the product from wherever it is placed, including trees, branches, or bushes, to avoid any undue strain or stress on the product conductors, connections and wires.
- When not in use, store neatly in a cool, dry location protected from sunlight.

## PART LIST (MODEL NO.:120V540-49305)

- 1 x Inflatable**
- 1 x Air blower**  
(Input: 120V AC 0.54A ~ 60Hz)
- 4 x Tethers**
- 8 x Tether Stakes**
- 2 x Air blower stakes**
- 1 x Extra Fuse (5amp, 125V)**
- 1 x Extra Lamp (C-7 lamp, 7W)**



# SETUP INSTRUCTIONS

1. Remove contents from packaging. Lay out deflated inflatable on a clear and flat area with the feet of the fan touching the ground.

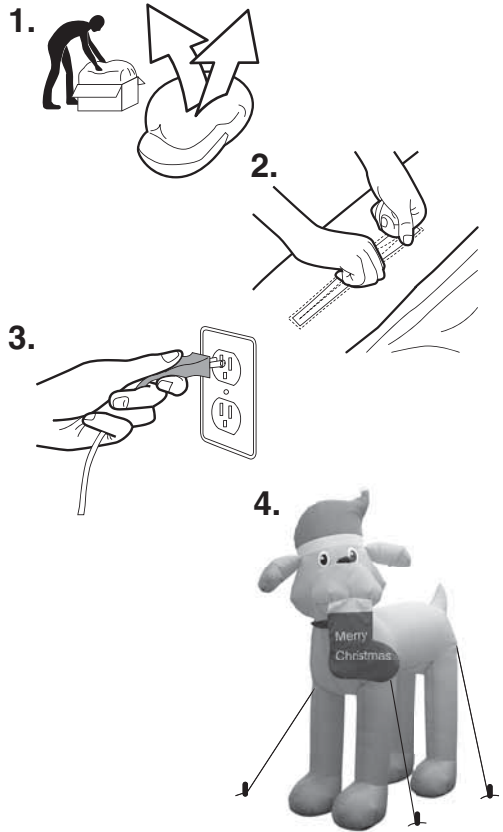
Remove all plastic fasteners and tags. These are part of the packaging and should be discarded.

2. Zip up the zipper into the closed position, inflatable will then fully inflate.

Locate the staking holes on the bottom of the Air blower and insert the Air blower stakes through the holes and into the ground.

3. Plug into receptacle or other outlet device to inflate your inflatable. NOTE: complete inflation may take a few minutes.

4. Once fully inflated, locate the Nylon Loops on the bottom of the fabric base and insert the spiral stakes through the Nylon loops and into the ground.



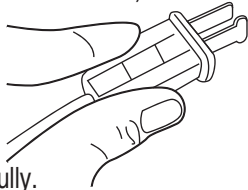
## CAUTION:

1. For even better nighttime illumination, you may choose to place an outdoor approved spotlight in front of your inflatable. (Outdoor approved spotlight not provided). Do not place the bulb too close to the inflatable as it may melt or damage the plastic.
2. Do not place any foreign objects inside your inflatable.
3. Do not block air intake area located on the base of your inflatable, it will decrease the inflation time.
4. During inclement weather conditions such as heavy rains, snow and windstorms, store the product indoors
5. Operation of your inflatable during extreme weather conditions is not recommended.
6. Do not store the inflatable when it is wet.

# USER SERVICING INSTRUCTION

## Replace the fuse:

1. Grasp plug and remove from the receptacle or other outlet device. Do not unplug by pulling on the cord.
2. Open the fuse cover. Slide opens the fuse access cover on top of the attachment plug towards blades. (See Illustration)



3. Remove fuse carefully.
4. Risk of fire: Replace fuse only with 5 Amp, 125V fuse (provided with product)
5. Close the fuse cover. Slide closed the fuse access cover on top of the attachment plug.
6. Risk of Fire: Do not replace the attachment plug. Contains a safety device (fuse) that should not be removed. Discard product if attachment plug is damaged.

## Lamp Replacement:

1. Grasp plug and remove from receptacle or other outlet device. Do not unplug by pulling on the cord.
2. Open the zipper.
3. Open the protective light cover carefully by pressing down on the two locking side tabs simultaneously.
4. Unscrew lamp counter-clockwise.
5. Replace lamp with only same type of lamp: C-7 lamp (one piece replacement lamp provided) 120V, 7W maximum, candelabra base and UL classified.

6. Do not over-tighten the lamp as this may damage the lamp or lamp-holder.
7. Be sure all zippers on characters should be completely closed before inflate operation so that air does not escape.

**CAUTION:** Disconnect the lighting string or decorative outfit from the outlet before removing a lamp and replacing it with the ornament.

**CAUTION:** Replace only with same type 7 Watt Max candelabra-base UL-Classified lamps.

**CAUTION:** Replace only with same type C7, Watt Max 7W UL Classified lamps.

**CAUTION:** To reduce the risk of fire do not deliberately reposition either lamp holder contact.

**CAUTION:** Do not attempt to inflate your inflatable during unusually strong winds. If it becomes too windy for safe operation, simply allow your inflatable to deflate and wait for better conditions before re-inflating.

**CAUTION:** Protect the electric fan and power cord from direct exposure to water. This precaution will reduce the risk of electrical shock. When the temperature is below 14°F (-10°C), the motor may temporarily stop running. The motor will begin functioning again in higher temperatures.

**CAUTION:** To reduce the risk of fire or electric shock, do not attempt to replace lamps or modify string.

# TROUBLE SHOOTING CHECKLIST

## **IF YOUR INFLATABLE IS NOT INFLATING, THE PROBLEM MAY BE:**

- The power source is disabled or the cord may be unplugged.
- Debris may be lodged in the motor.  
NOTE: Periodically, the inflatable air-intake area may become clogged with grass, leaves or other debris. For best results, it is recommended to check this air-intake area and clean as necessary.
- Occasionally, the hanging fabric of a partially-inflated inflatable can become attached to the Motor's air- intake area. Ensure that fabric is not hanging near the motor during inflation.
- The zippers which seal the inflatable may not be securely closed.
- The connection between the inflatable and fan may not be securely attached.

For questions or problems with this product please email [customerservice@toysinquiry.com](mailto:customerservice@toysinquiry.com) for expedited assistance or call 1-800-434-6178.

PLEASE RETAIN THIS INFORMATION  
FOR FUTURE REFERENCE.  
COLORS AND CONTENTS MAY VARY

 *ccasions*

LOS ANGELES, CA 90064.  
ALL RIGHTS RESERVED  
MADE IN CHINA